

Cathedral Archer Project Newsletter

Edition 5 Autumn/Winter 2008

Welcome

Dear Friends,

Winter must be approaching as the Harvest donations have been arriving by the car load. Thank you all for your generosity. The stack of baked beans in our store room has grown radically.

We would like to share our appreciation and thanks for all your support by inviting you to our annual Celebration of Carols on 19th December 2008 at 12.30 pm followed by a light buffet lunch. Everyone is welcome, just complete the enclosed reply form and let us know how many will be attending.

Inside the newsletter we have included some pictures of Harvest and have also broken down how that helps our service users on a weekly basis. For those who have made donations, there is an article on how important gift aid is to us and a story about the benefits of a legacy.

We look forward to seeing you in December.

Tracy

Celebration of Carols—19 December 2008

On Friday 19th December 2008 we shall be hosting our Celebration of Carols in the Cathedral followed by lunch.

Last year over 500 people attended. It was a truly memorable occasion, and heart-warming to see a full Cathedral of our friends singing Christmas Carols and sharing lunch with us.

We also raised over £1,400 in the collection as well as receiving generous gift and food donations so we could give each client "Christmas in a box". They all received a Christmas Dinner including pudding and a gift to unwrap on Christmas Day. We would like to achieve this again, and look forward to welcoming you all at the Cathedral in December. Please remember to fill in the form and let us know if you are coming.

If you would like to bring a contribution, we are looking for:

- Tinned meat
- Tinned vegetables
- Tinned potatoes
- Small Christmas pudding
- Small sauce
- Tinned fruit
- Mince pies
- Basic toiletries
- Gloves/hats/scarves/socks

Autumn/Winter 2008

Inside this issue:

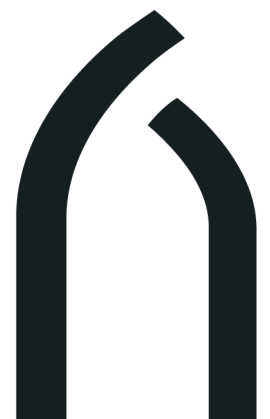
- 1 Welcome
Celebration of Carols
- 2 Harvest
- 3 Gift Aid
Legacy Giving
- 4 Big Sleep Out



Reredos of St Katharine's Chapel, Sheffield Cathedral

The Cathedral Archer Project

Sheffield Cathedral Church Street Sheffield S1 1HA T. 0114 263 6974 F. 0114 263 6971
Registered Company No.03188162 Registered Charity No. 1064818
www.sheffield-cathedral.org.uk



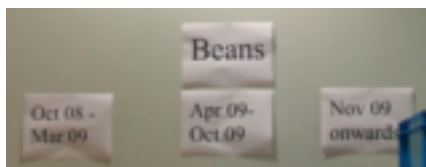
Harvest

Every year we are inundated with harvest collection donations of food, toiletries and clothing.

These donations are vital to our existence and to the support we offer the homeless and vulnerable on a daily basis. Nothing goes to waste as all the carrier bags are used for food parcels for the rough sleepers packs.



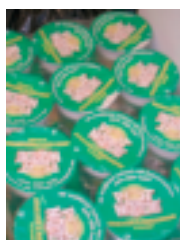
This year, as in previous years we have asked for donations of tinned goods, pot noodles, soups, toiletries, tea, coffee, blankets and sleeping bags.



The donations are sorted into food type groups and then again into **Best Before** date order so they are stored correctly for proper stock management. We cannot hand out out-of-date food, just like shops should not sell it.

The food donated goes towards the food parcels we hand out on a daily basis for the rough sleepers, service users in interim accommodation and those just learning to cope with their own place as well as all their new bills.

A rough sleepers food parcel is slightly different to one for someone with access to a microwave or cooker.



Firstly the tins need to have ring pulls. Also, they need a hot meal so cuppa soups and pot noodles are an essential part of their diet as they can quite easily gain access to hot water. Instant tea and coffee already in a cup is also useful. Another way for an instant meal is to use the individual cereal boxes, milk can be poured straight into the plastic bag containing the cereal and eaten from the packet.

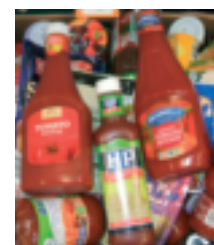


For those in interim accommodation, pasta and other basic ingredients are manageable as long as the service users have access to a cooker. They can then cope with the basic components of a meal and start to put things together. So pasta with a tin of tomatoes and a tin of tuna makes quite a meal. Again, they still require tea, coffee and other basics.

Occasionally, especially just after harvest, we have packets of biscuits and chocolate, which we ration and share amongst as many people as possible.

We currently hand out over 50 food parcels a week and over 52 weeks that adds up to a lot of tins and pot noodles.

We also use the donated food to support our supplies for breakfast and lunch. One of the key benefits that the clients notice is the increase in choice of cereal immediately after Harvest deliveries. From our chef's perspective, it means there are more options for a balanced diet with more variety. The clients do notice this and are always pleased as we are able to replenish the ketchup, brown sauce and other basics.



THANK YOU

We are unable to put an accurate monetary value on these donations, to our service users it is priceless. These donations keep them going into next summer and hopefully beyond, depending on the numbers of people we support over the year.

So a huge **'thank you'** to everyone that contributes, as well as the army of volunteers that come in over the Harvest period to help us sort everything and remove it to safe storage.

Gift Aid - what a difference it can make!

You are probably all aware of gift aid, but do you know the impact it has on our project such as ours?

With the gift aid from last year's monthly standing order donations you supplied 175 food parcels for rough sleepers. That is on top of the benefit of the original donation.



The gift aid from the sponsorship of the 2007 Big Sleep Out provided 250 cooked breakfasts including as much cereal as clients can eat, porridge, toast, tea or coffee and bacon, sausages or eggs.

The gift aid from the Carol Service collection and Christmas donations has provided £5 incentive vouchers for 112 service users to attend literacy and numeracy classes. These are usually spent on food.

Your donations ensure we can continue to support the homeless and vulnerable in Sheffield. If these are gift aided, it makes your donation go so much further.

If you are a UK Tax Payer, please gift aid all your donations, use the enclosed form whether it is for a one-off donation or regular giving.

giftaid it

You can see the difference it can make.

Legacy giving

Have you made your will or are you planning to make any amendments? A Sheffield lady amended hers which resulted in the Cathedral Archer Project receiving a legacy in 2006. A real bonus that was totally unexpected.

A Sheffield lady left us 25% of the residual of her estate. After the sale of her home, this came to £96,000. It has meant so much more than income for CAP, it meant an opportunity to invest in the future sustainability of the project.

We spent some of the money on vital equipment for the new centre ready for when we moved in. The most significant investment was in the staff team. The legacy enabled us to look longer term than we were used to doing. We set about developing a team better able to meet the clients needs and, hopefully, with the skills to ensure a sustainable and consistent service.

The donor of the legacy was a mystery. We had not heard of her and subsequent investigations did not shed a great deal of light. All we do know is that she was a local person, living in an average street in Sheffield and supported her local community. She cared deeply about issues such as homelessness and knew of our work through her local church. We were very grateful and a little in awe of her generosity. It touched us deeply. She is remembered in the centre by having a room named in her honour.

We know it is morbid to talk about legacies and dying, but a legacy can make such a difference. We would ask you to consider us when making your will or if you are amending it at anytime in the future.

Legacies can be for set amounts, a share of the residual after other gifts are made or for specific items to be sold and the money raised to benefit the charity. They are also free of inheritance tax, so a donation made in your will can also help reduce the tax burden on your estate. Your solicitor will be able to advise you about including a charitable donation in your will.

If you would like more information from an independent source, you can visit www.remembercharity.org.uk to find out more about charitable legacies .

Big Sleep Out – 2nd September 2008

Our 2nd Big Sleep out took place on 2nd September on the Cathedral forecourt raising money for Kickstart Community Programmes and ourselves.

We had teams from Sheffield Theatres, DLA Piper, Irwin Mitchell, Keeble Hawsons and Halliwells, as well as a few brave people who came on their own.

It started off quite bright but unfortunately started to rain—that horrible misty stuff that made everything wet, but as you can see from the photo, there were quite a few resourceful people around. Breakfast was donated by The Royal Victoria Holiday Inn and was very welcome when it arrived at 6.30 am.

The sponsorship money is still coming in, so the total raised is still rising. Thank you to everyone who took part and all of you who sponsored us.

We are planning to do it all again in 2009 so if you are interested in taking part, let us know.



Open days — Invitation

If you are a member of a group or organisation that would like to have a tour of the Cathedral Archer Project and find out more about the project, we will be happy to welcome you.

We have set aside the last Wednesday in each month to welcome groups and show them around.

All you need to do is:

- Phone Anne or Tracy on 0114 2626973 or
- Email Tracy at tracy.viner@sheffield-cathedral.org.uk and let us know:
 - which date you would like to attend.
 - how many will be in your group.



How you can help make a difference

There are many ways you can support the Cathedral Archer Project and make a difference to the homeless and vulnerable.

Food donation

You can make a big difference to the homeless and vulnerable with a donation of food (we particularly need tinned fish or meat) or toiletries (shower gel, shaving foam, toothbrushes, razors).



Fundraising

We need £350,000 to maintain our services for a year. Your support is vital. Please consider the Cathedral Archer Project as your benefiting charity for raffles and fundraising events. We would love to support your activities, so please get in touch.

General Donations

We always welcome general donations. Please let us know if you are a UK taxpayer, so we can claim the gift aid - an extra 28p for every £1.00. This really does make a difference.